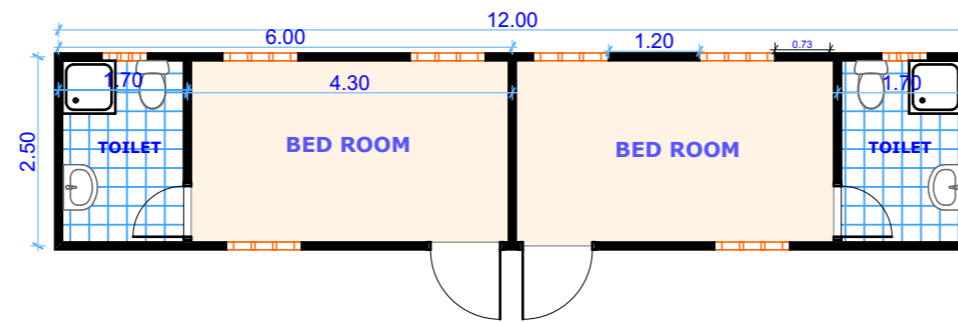


OFFICE CONTAINER FLOOR PLAN

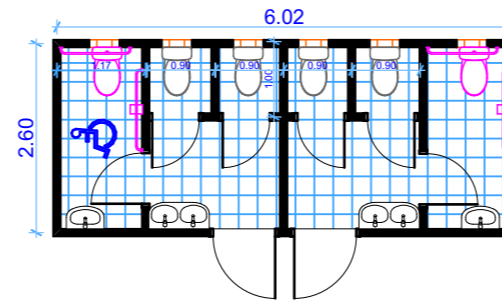


ACCOMMODATION CONTAINER FLOOR PLAN

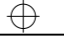
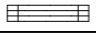
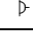

OFFICE / ACCOMMODATION CONTAINERS

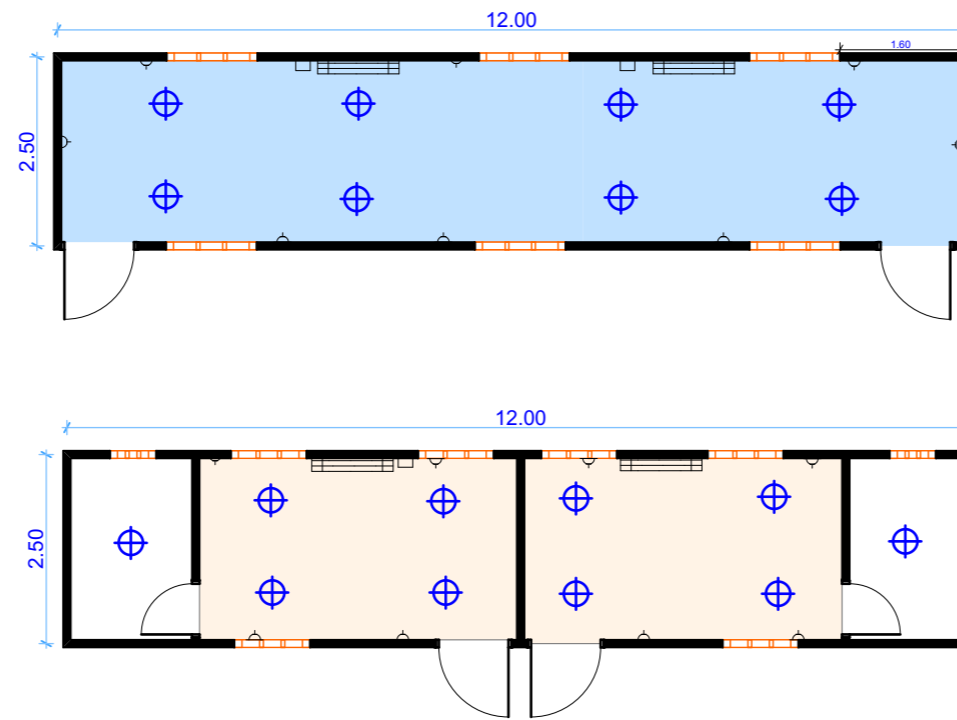
UNHCR SUDAN CO REV.00

DATE: NOVEMBER 2021



TOILETS CONTAINER FLOOR PLAN

SYMBOL	DESCRIPTION
	CEILING LED LAMP
	AIR CONDITION
	13 AMP SOCKET
	AC SOCKET



CONTAINER ELECTRICAL PLAN

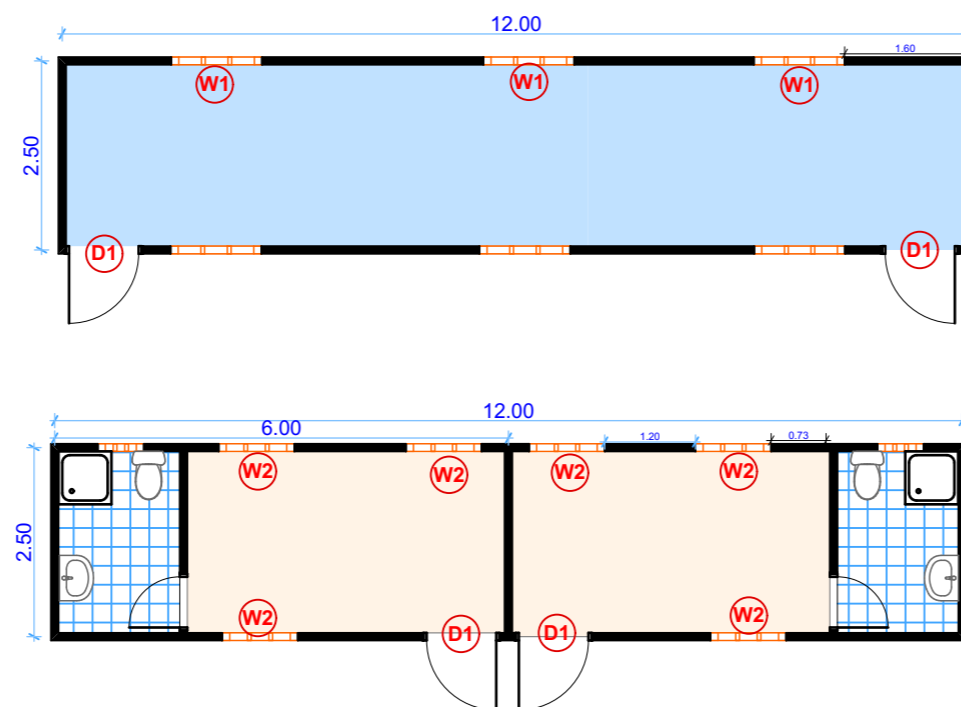
OFFICE / ACCOMMODATION CONTAINERS

UNHCR SUDAN CO REV.00

DATE: NOVEMBER 2021

DOORS & WINDOWS

TYPE	W	H
D1	0.90	2.00
W1	1.20	0.90
W2	1.00	0.90



DOORS AND WINDOWS